

# Neurological Alliance

## Neuro Numbers



The NHS spent over  
**£4.4 BILLION**  
on neurological conditions  
in 2012/13, representing 4.2%  
of overall NHS expenditure<sup>1</sup>



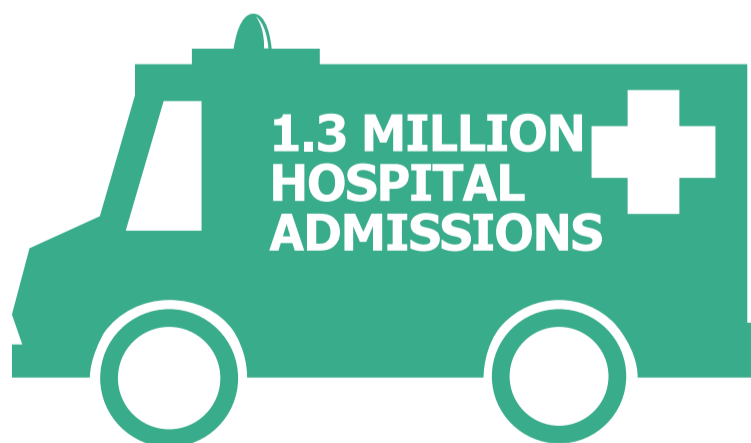
## OVER 700,000 EMERGENCY ADMISSIONS

were recorded for people with a neurological  
diagnosis in 2012/13, costing the NHS over  
£750 million<sup>2</sup>

Overall NHS expenditure  
on neurological conditions  
increased by over

**200%** ↑

between 2003/4 and 2012/13<sup>3</sup>



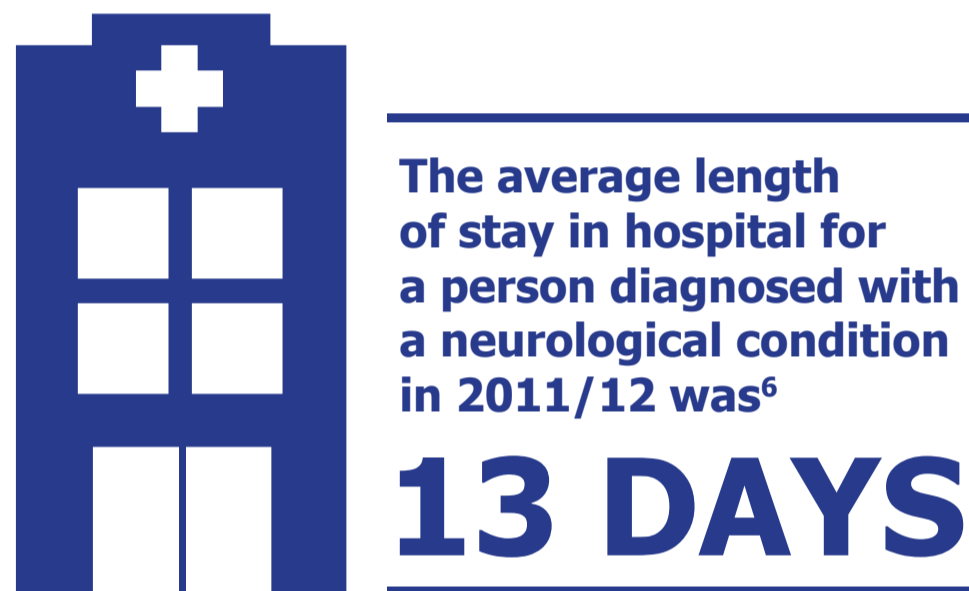
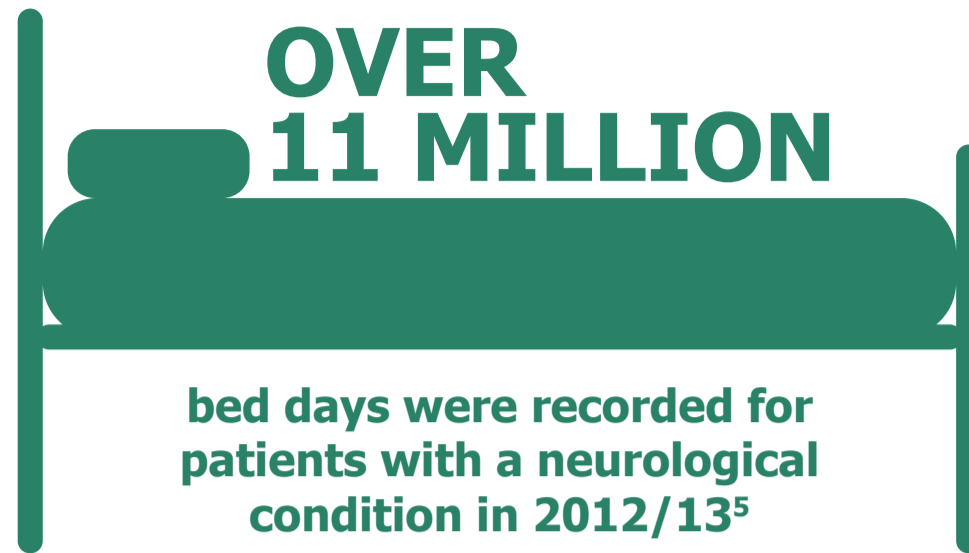
were recorded for  
people with a neurological  
diagnosis in 2012/13 - this  
represents an increase of  
more than 500,000 over  
a five year period<sup>4</sup>

### References

<sup>1</sup> Department of Health, *Programme budgeting data 2012/13*, February 2014

<sup>2</sup> Health and Social Care Information Centre, *Number of Finished Admission Episodes (All, Elective and Emergency) for Neurological Conditions by England and CCG of Treatment (2012-13)*, March 2014. Available here: <http://www.hscic.gov.uk/catalogue/PUB13776>

<sup>3</sup> Department of Health, *Programme Budgeting Data 2012/13*, February 2014



---

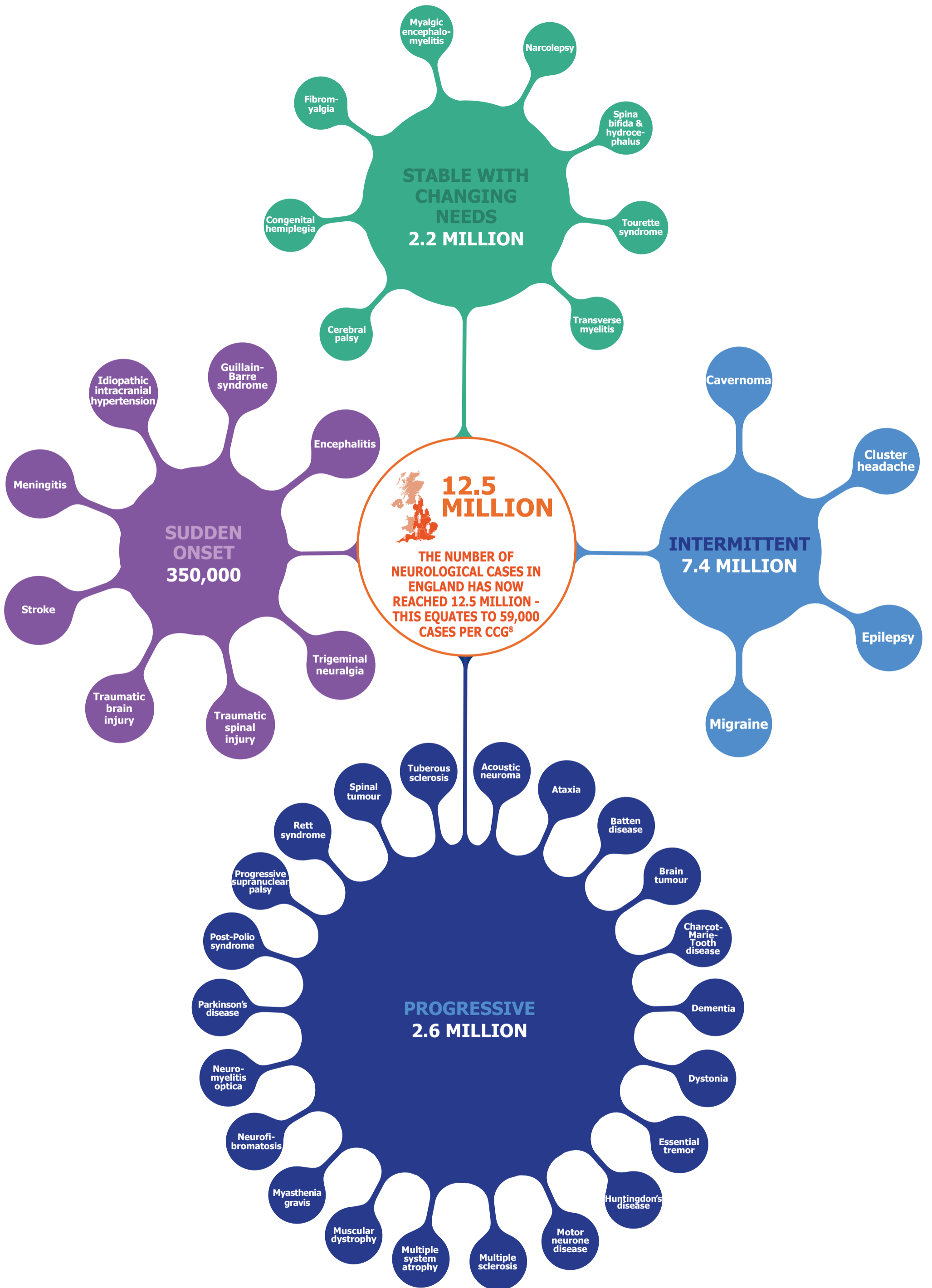
#### References

<sup>4</sup> Health and Social Care Information Centre, *Number of Finished Admission Episodes (All, Elective and Emergency) for Neurological Conditions by England and CCG of Treatment (2012-13)*, March 2014. Available here: <http://www.hscic.gov.uk/catalogue/PUB13776>

<sup>5</sup> Health and Social Care Information Centre, *Number of bed days for Neurological Conditions for England and CCG of Treatment (2012-13)*, March 2014. Available here: <http://www.hscic.gov.uk/catalogue/PUB13776>

<sup>6</sup> Health and Social Care Information Centre, *Tables showing mean and median length of stay for patients with primary and secondary diagnoses of a neurological condition, by primary care trust (of main provider) for the years 2007-08 to 2011-12*. Available at: [http://www.parliament.uk/business/publications/business-papers/commons/deposited-papers/?page=3&td=2014-01-01&search\\_term=Department%20of%20Health&itemId=119014#toggle-1749](http://www.parliament.uk/business/publications/business-papers/commons/deposited-papers/?page=3&td=2014-01-01&search_term=Department%20of%20Health&itemId=119014#toggle-1749)

<sup>7</sup> House of Commons Committee of Public Account, *Services for people with neurological conditions*, February 2012. Available at: <http://www.publications.parliament.uk/pa/cm201012/cmselect/cmpubacc/1759/1759.pdf>



<sup>8</sup> Figures based on estimations of condition prevalence using the references detailed in the accompanying data table overleaf. Where only UK prevalence figures were available a calculation has been made based on the Office for National Statistics estimation of UK and England populations, available here: <http://www.ons.gov.uk/ons/rel/pop-estimate/population-estimates-for-uk-england-and-wales-scotland-and-northern-ireland/mid-2011-and-mid-2012/index.html>, and the Central Statistics' Office estimation of the Republic of Ireland's population, available here: [http://www.cso.ie/en/releasesandpublications/er/pme/populationandmigrationestimatesapril2013/#.Uw47Wvl\\_vmc](http://www.cso.ie/en/releasesandpublications/er/pme/populationandmigrationestimatesapril2013/#.Uw47Wvl_vmc)

Condition	Categorisation	Prevalence (England)	Reference	Incidence
Acoustic neuroma	Progressive	845	British Acoustic Neuroma Association <a href="http://www.bana-uk.com/">http://www.bana-uk.com/</a>	-
Ataxia	Progressive	8,400	Ataxia UK <a href="http://www.ataxia.org.uk/">http://www.ataxia.org.uk/</a> AT Society <a href="http://www.atsociety.org.uk/">http://www.atsociety.org.uk/</a>	-
Batten disease	Progressive	170	Batten Disease Family Association <a href="http://www.bdfa-uk.org.uk/about-batten-disease">http://www.bdfa-uk.org.uk/about-batten-disease</a>	-
Brain tumour	Progressive	-	Brain Research Trust <a href="http://www.brt.org.uk/brain-tumours">http://www.brt.org.uk/brain-tumours</a> Brain Tumour UK <a href="http://www.braintumouruk.org.uk/">http://www.braintumouruk.org.uk/</a>	13,000 diagnoses each year in the UK
Cavernoma (includes symptomatic brain cavernoma)	Intermittent	75,730	Cavernoma Alliance UK <a href="http://www.cavernoma.org.uk/cavernoma.html">http://www.cavernoma.org.uk/cavernoma.html</a>	-
Cerebral palsy	Stable with changing needs	24,620	Scope <a href="http://www.scope.org.uk/help-and-information/cerebral-palsy/introduction-cerebral-palsy">http://www.scope.org.uk/help-and-information/cerebral-palsy/introduction-cerebral-palsy</a>	-
Charcot-Marie-Tooth disease	Progressive	19,320	CMT UK <a href="http://www.cmt.org.uk/What-is-cmt.php">http://www.cmt.org.uk/What-is-cmt.php</a>	-
Cluster headache	Intermittent	80,260	Migraine Trust <a href="http://www.migranetrust.org/factsheet-cluster-headache-10908">http://www.migranetrust.org/factsheet-cluster-headache-10908</a>	-
Congenital hemiplegia	Stable with changing needs	53,500	HemiHelp <a href="http://www.hemihelp.org.uk">http://www.hemihelp.org.uk</a>	-
Dementia (includes Alzheimer's)	Progressive	665,070	Alzheimers Society <a href="http://www.alzheimers.org.uk/statistics">http://www.alzheimers.org.uk/statistics</a>	-
Dystonia	Progressive	58,800	Dystonia Society <a href="http://www.dystonia.org.uk/index.php/about-dystonia">http://www.dystonia.org.uk/index.php/about-dystonia</a> ADDER <a href="http://www.actionfordystonia.co.uk/">http://www.actionfordystonia.co.uk/</a>	-
Encephalitis	Sudden onset	-	The Encephalitis Society <a href="Http://www.encephalitis.info/information/the-illness/frequently-asked-questions/">Http://www.encephalitis.info/information/the-illness/frequently-asked-questions/</a>	6,000 cases in England each year
Epilepsy	Intermittent	504,000	Epilepsy Action <a href="https://www.epilepsy.org.uk/info/what-is-epilepsy">https://www.epilepsy.org.uk/info/what-is-epilepsy</a> Epilepsy Society <a href="http://www.epilepsysociety.org.uk/">http://www.epilepsysociety.org.uk/</a> Joint Epilepsy Council <a href="http://www.jointepilepsycouncil.org.uk/">http://www.jointepilepsycouncil.org.uk/</a> SUDEP Action <a href="https://www.sudep.org/">https://www.sudep.org/</a>	-
Essential tremor	Progressive	1,417,960	National Tremor Foundation <a href="http://www.tremor.org.uk/">http://www.tremor.org.uk/</a> Patient UK <a href="http://www.patient.co.uk/health/Essential-Tremor">http://www.patient.co.uk/health/Essential-Tremor</a>	-
Fibromyalgia	Stable with changing needs	1,638,000	FibroAction <a href="http://www.fibroaction.org/Pages/About-Fibro.aspx">http://www.fibroaction.org/Pages/About-Fibro.aspx</a>	-
Guillain-Barre syndrome	Sudden onset	800	Gain Charity <a href="http://www.gaincharity.org.uk/">http://www.gaincharity.org.uk/</a>	-
Huntingdon's disease	Progressive	6,580	Huntingdon's Disease Association <a href="http://www.hda.org.uk">http://www.hda.org.uk</a>	-
Idiopathic intracranial hypertension	Sudden onset	800	IhavellH Foundation <a href="http://www.ihavellh.com">http://www.ihavellh.com</a>	-
Meningitis	Sudden onset	-	Meningitis Research Foundation <a href="http://www.meningitis.org/facts">http://www.meningitis.org/facts</a>	3,200 cases per year in the UK
Migraine	Intermittent	6,720,000	Migraine Trust <a href="http://www.migranetrust.org/key-statistics">http://www.migranetrust.org/key-statistics</a>	-
Motor neurone disease	Progressive	3,750	MND Association <a href="http://www.mndassociation.org/what-is-mnd/Brief+guide+to+MND.html">http://www.mndassociation.org/what-is-mnd/Brief+guide+to+MND.html</a>	-
Multiple sclerosis	Progressive	84,000	MS Society <a href="http://www.mssociety.org.uk/what-is-ms">http://www.mssociety.org.uk/what-is-ms</a> MS Trust <a href="http://www.mstrust.org.uk">http://www.mstrust.org.uk</a>	-
Multiple system atrophy	Progressive	2,520	Multiple System Atrophy Trust <a href="http://www.msatrust.org.uk/understanding-msa/what-is-MSA/">http://www.msatrust.org.uk/understanding-msa/what-is-MSA/</a>	-

Muscular dystrophy	Progressive	58,800	Muscular Dystrophy Campaign <a href="http://www.muscular-dystrophy.org/">http://www.muscular-dystrophy.org/</a> Action Duchenne <a href="http://www.actionduchenne.org/">http://www.actionduchenne.org/</a>	-
Myalgic encephalomyelitis (ME)	Stable with changing needs	215,000	Action for ME <a href="http://www.actionforme.org.uk/">http://www.actionforme.org.uk/</a> National ME Centre <a href="http://www.nmec.org.uk/">http://www.nmec.org.uk/</a>	-
Myasthenia gravis	Progressive	6,300	Myasthenia Gravis Association <a href="http://www.mga-charity.org/information-mg/myasthenia-gravis/77-home/84">http://www.mga-charity.org/information-mg/myasthenia-gravis/77-home/84</a>	-
Narcolepsy	Stable with changing needs	21,000	Narcolepsy UK <a href="http://www.narcolepsy.org.uk/about-narcolepsy/who-does-it-affect">http://www.narcolepsy.org.uk/about-narcolepsy/who-does-it-affect</a>	-
Neurofibromatosis	Progressive	21,860	The Neuro Foundation <a href="http://www.nfauk.org/what-is-neurofibromatosis/">http://www.nfauk.org/what-is-neurofibromatosis/</a>	-
Neuromyelitis optica	Progressive	840	NMO Specialised Services <a href="http://www.nmouk.nhs.uk/what-is-nmo/more-about-nmo">http://www.nmouk.nhs.uk/what-is-nmo/more-about-nmo</a>	-
Parkinson's disease	Progressive	106,680	Parkinson's UK <a href="http://www.parkinsons.org.uk/content/about-parkinsons">http://www.parkinsons.org.uk/content/about-parkinsons</a> Cure Parkinson's Trust <a href="http://www.cureparkinsons.org.uk">http://www.cureparkinsons.org.uk</a>	-
Post-Polio syndrome	Progressive	100,800	British Polio Fellowship <a href="http://www.britishpolio.org.uk/">http://www.britishpolio.org.uk/</a> Polio Survivors Network <a href="http://www.poliosurvivorsnetwork.org.uk/">http://www.poliosurvivorsnetwork.org.uk/</a>	-
Progressive supranuclear palsy	Progressive	5,880	PSP Association <a href="http://www.pspassociation.org.uk/what-is-ppsp/">http://www.pspassociation.org.uk/what-is-ppsp/</a>	-
Rett syndrome	Progressive	2,250	NHS Choices <a href="http://www.nhs.uk/conditions/Rett-syndrome/Pages/Introduction.aspx">http://www.nhs.uk/conditions/Rett-syndrome/Pages/Introduction.aspx</a>	-
Spina bifida and hydrocephalus	Stable with changing needs	-	NHS Choices <a href="http://www.nhs.uk/conditions/hydrocephalus/pages/introduction.aspx">http://www.nhs.uk/conditions/hydrocephalus/pages/introduction.aspx</a>	1 in 1,000 born in Britain
Spinal tumour	Progressive	-	Macmillan Cancer Support <a href="http://www.macmillan.org.uk/Cancerinformation/Cancertypes/Spinalcord/Spinalcordtumours.aspx">http://www.macmillan.org.uk/Cancerinformation/Cancertypes/Spinalcord/Spinalcordtumours.aspx</a>	4,700 per year in the UK
Stroke (includes ischaemic and hemorrhagic)	Sudden onset	316,080	Stroke Association <a href="http://www.stroke.org.uk/news/stroke-facts-and-statistics-your-area">http://www.stroke.org.uk/news/stroke-facts-and-statistics-your-area</a> Fighting Strokes <a href="http://www.fightingstrokes.org/">http://www.fightingstrokes.org/</a> Different Strokes <a href="http://www.differentstrokes.co.uk/">http://www.differentstrokes.co.uk/</a>	-
Tourette syndrome	Stable with changing needs	252,000	Tourette's Action <a href="http://www.tourettes-action.org.uk/67-what-is-ts.htm">http://www.tourettes-action.org.uk/67-what-is-ts.htm</a>	-
Transverse myelitis	Stable with changing needs	3,820	Transverse Myelitis Society <a href="http://www.myelitis.org.uk/treatment-and-recovery.html">http://www.myelitis.org.uk/treatment-and-recovery.html</a>	-
Traumatic brain injury (defined as ranging from minor brain injuries to severe injuries causing long-term disability)	Sudden onset	-	Headway <a href="http://www.headway.org.uk/key-facts-and-statistics.aspx">http://www.headway.org.uk/key-facts-and-statistics.aspx</a> UKABIF <a href="http://www.ukabif.org.uk/">http://www.ukabif.org.uk/</a>	170,000 per year in the UK
Traumatic spinal injury (includes falls and road traffic accidents and sporting accidents, such as through horse riding, diving and rugby)	Sudden onset	31,200	Every Eight Hours Campaign <a href="http://www.everyeighthours.com/about-spinal-cord-injury">http://www.everyeighthours.com/about-spinal-cord-injury</a>	-
Trigeminal neuralgia	Sudden onset	-	Trigeminal Neuralgia Association <a href="http://www.tna.org.uk/">http://www.tna.org.uk/</a>	Annual incidence of new cases in England of 7,000
Tuberous sclerosis	Progressive	6,720	Tuberous Sclerosis Association <a href="http://www.tuberous-sclerosis.org/about_TSC.html">http://www.tuberous-sclerosis.org/about_TSC.html</a>	-